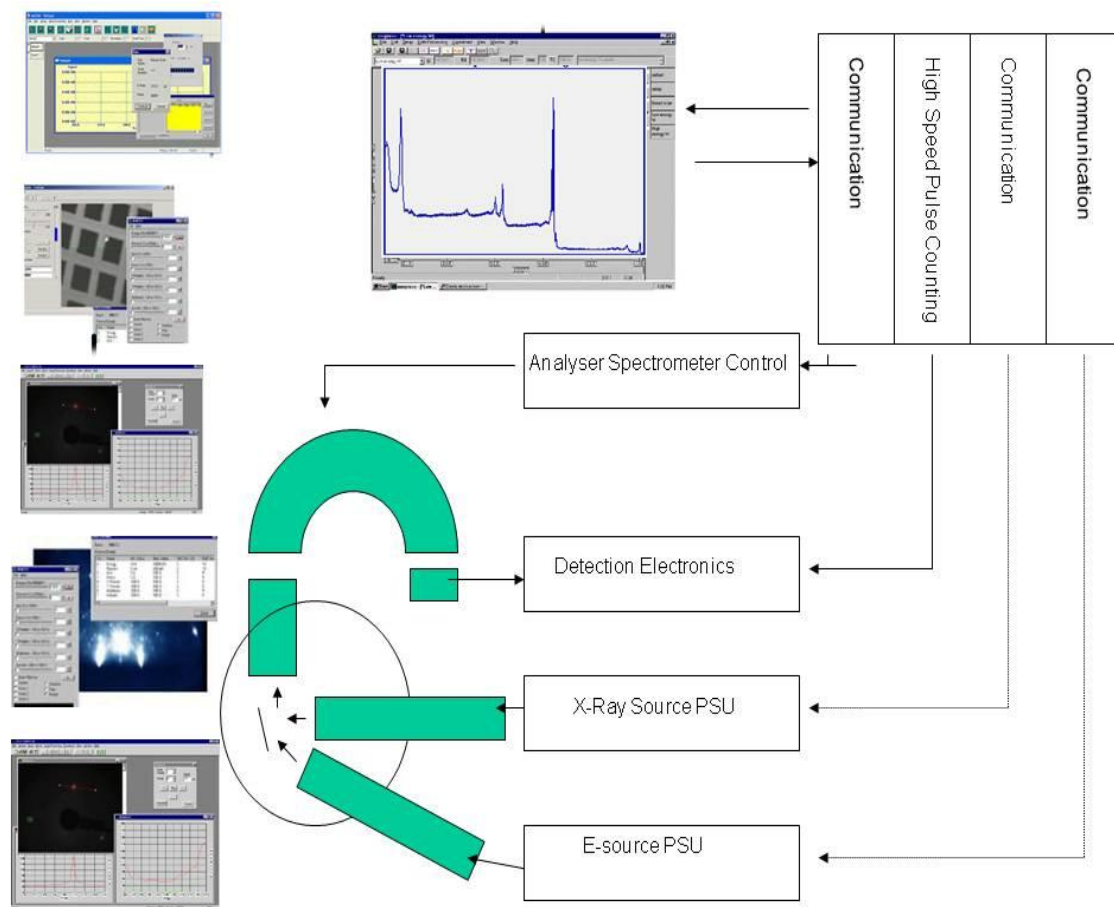


# SurfaceScienceSoftware.com

## Virtual Surface Science Workstation

A LabVIEW-based control system for a surface science experimental station



We present a software package developed on the LabVIEW platform which controls a synchrotron radiation experimental station for surface science experiments and allows users efficient use of the equipment. In contrast to other programming environments, LabVIEW offers programmers an effective way of integrating the functions of several real instruments in a virtual instrument. By means of GPIB and serial communication our software controls most *of* the instruments attached to the experimental station. We developed programs (sub-virtual instruments) that allow interaction with the instruments by means of realistic-looking and -acting control virtual tools (knobs and buttons), which the user can 'handle' on the computer screen using the mouse. These 'virtual panels' allow simultaneous control of all the devices involved in a specific experiment, performing sequences of operations in an automated way.

### For further information contact:

Business Integration Software Ltd, Tunbridge Wells, Kent UK

Telephone & Fax: (0) 1892 529563 Mobile: 0777 197 0567

Email: [sales@SurfaceScienceSoftware.com](mailto:sales@SurfaceScienceSoftware.com)