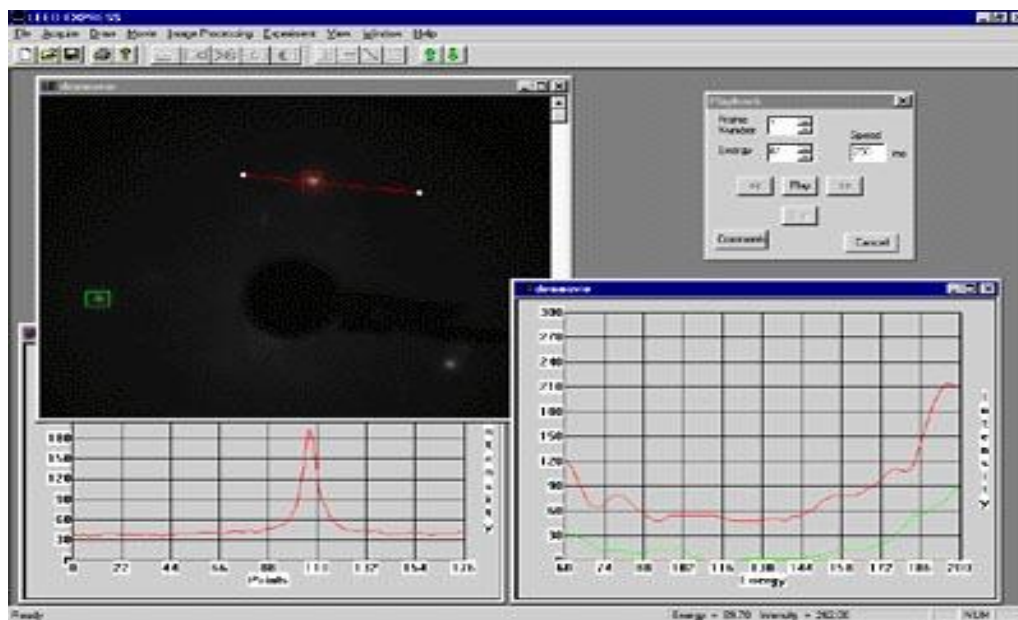


SurfaceScienceSoftware.com

LEED

Image data acquisition and analysis – fully integrated multitasking analysis software for Windows XP and Vista.



Imaging

- Real time image display, Single or multiple frames capture
- Frame averaging and integration supported in all modes
- Dynamic adjustment of brightness and contrast
- Enhancement by background subtraction and contrast
- Stretching (linear or non-linear)
- Images exported as standard bitmaps
- Capture movies to hard disk (up to 10fps)
- Movies can be analysed later using all features of LEEDexpress, LEED Imaging or LEED Office.

Intensity Vs Energy I(V) Measurements

- Real time display of intensity and up to 18 spot positions
- Record I(V) movie, measurements through movie features
- Spot tracking manual, automatic and Template with variable
- Retention intensity
- R-Factor Analysis for crystal alignment
- Average I(V) spectra

For further information contact:

Business Integration Software Ltd, Tunbridge Wells, Kent UK

Telephone & Fax: (0) 1892 529563 Mobile: 0777 197 0567

Email: sales@SurfaceScienceSoftware.com



Spots and Profiles

- Multiple dynamic line profiles in any direction
- Real time line profiles
- Manual or automatic spot and line management
- Saturated spot diffusion
- Automatic calculation of spot size
- Peak locking on spot and Auto default size of spot

LEED Energy and Target Current

- Energy control 0-10V for 0eV to 1000eV(Programmable)
- Target current and External input measurements

Intensity Vs Time I(t) Measurements

- Live display of time analysis
- Playback I(t) measurements through movie feature
- Smoothing

Frame grabbing

- Works with any CCIR standard camera
- On-camera integration option using Cohu 4910 camera
- Sync correction for VCRs
- Wide range of black and white level adjustment
- 512X512 area from CCIR 768X576 frame

System requirements

- Minimum: Pentium 133 with 32Mb RAM/1Gb Hard Disk
- Recommended: Pentium II with 64Mb RAM
- Windows VISTA and XP Professional
- CCIR standard camera

Options

- Computer
- CCIR Camera and Time integration module
- Customised software

For further information contact

Business Integration Software Ltd, Tunbridge Wells, Kent UK

Telephone & Fax: (0) 1892 529563 Mobile: 0777 197 0567

Email: <mailto:sales@surfacesciencesoftware.com>